

CBR Proficiency

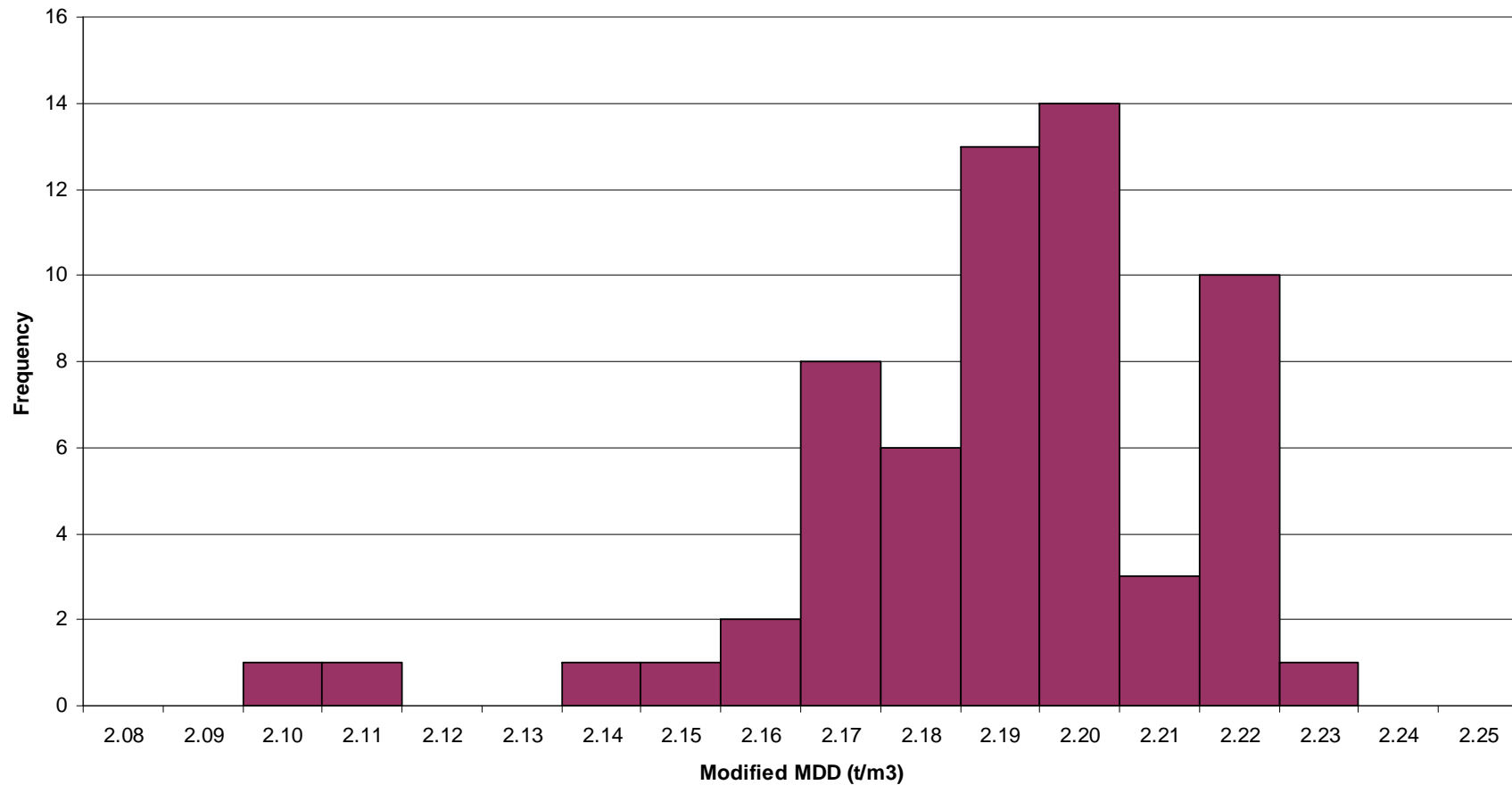
Some Observations

Summary of Published Conclusions

Result	Outliers	Comments
Maximum Dry Density	2	Range 2.100 to 2.232 t/m ³ . Outliers both low. Considered a “very good result”.
Optimum Moisture Content	None	Range 4,8 – 6.9%. Considered a “satisfactory result”.
CBR @ 2.5 mm	2	Range 11% - 110%. Outliers both high. After Coefficient of Variation was adjusted to a “target” value somewhat lower than that derived from the results. No outliers prior to this adjustment. Statistical improvement found on the basis of the adjusted CV. Considered “does not reflect what would be considered an acceptable Robust CV in the industry”.
CBR @ 5 mm	2	Range 19% - 130%. Outliers low and high. Otherwise as above

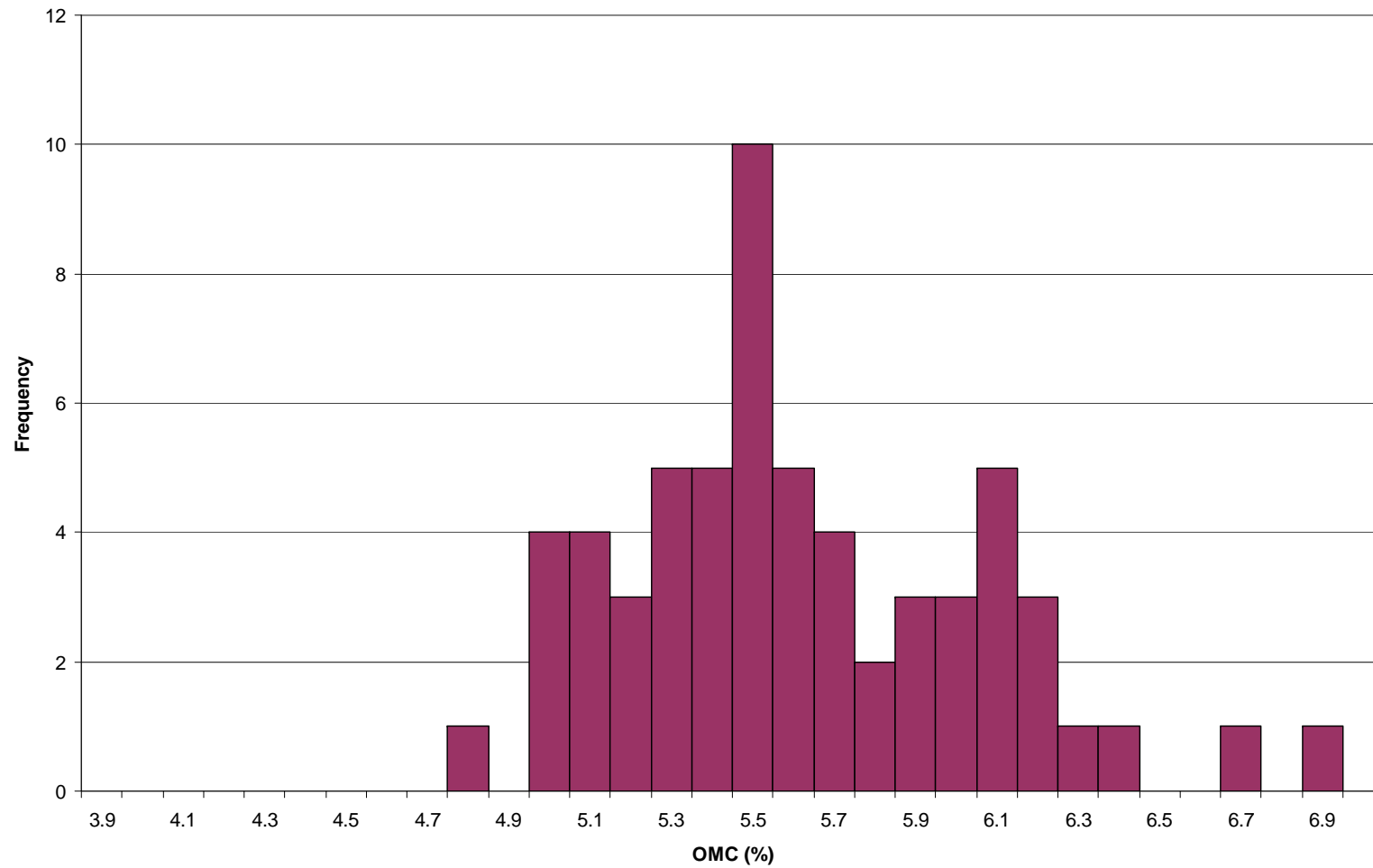
MDD Frequency

PT:A CBR Proficiency Programme - Soils Round #8
Modified MDD Results



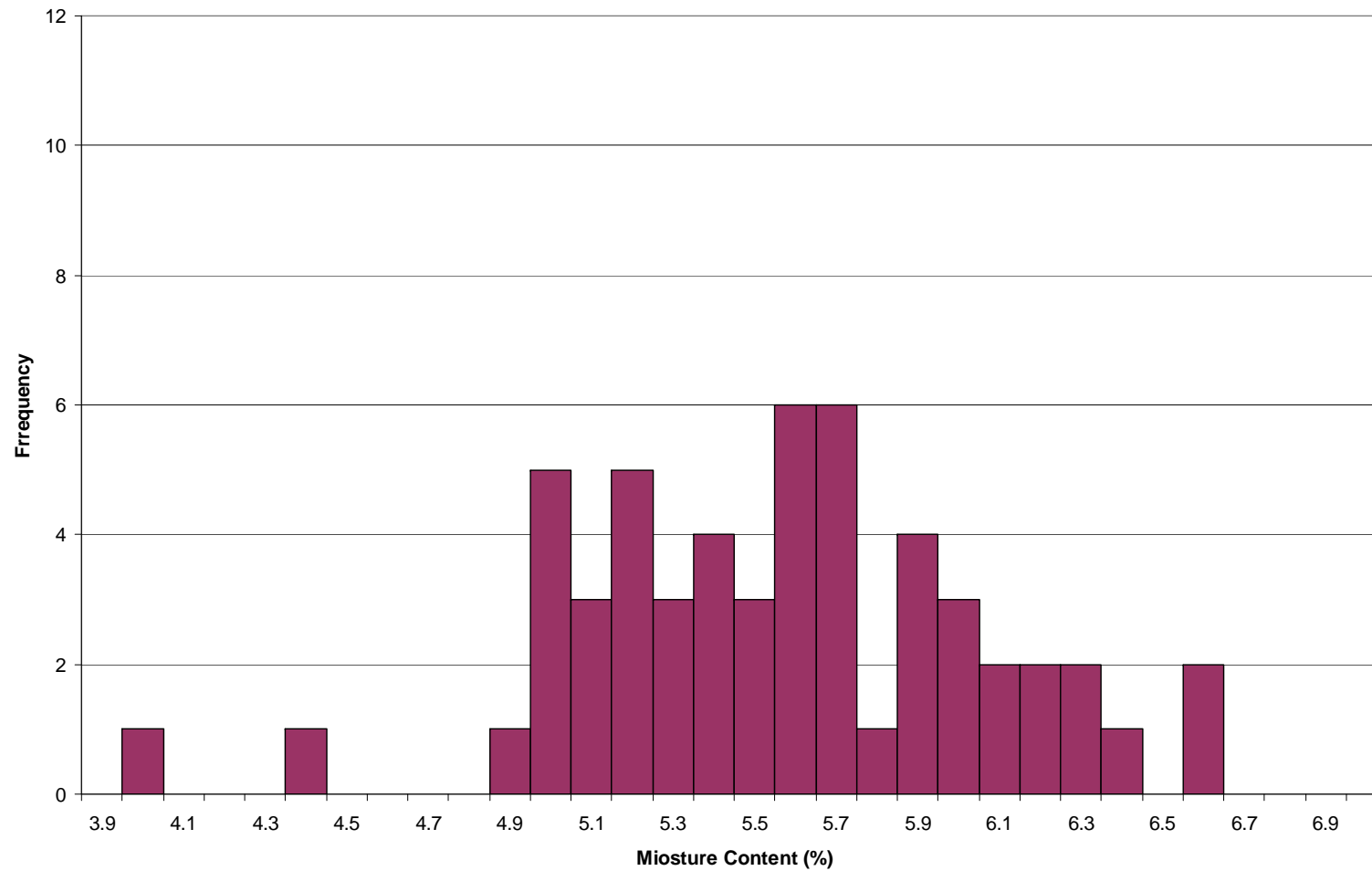
OMC Frequency

Frequency Distribution - Optimum Moisture Content



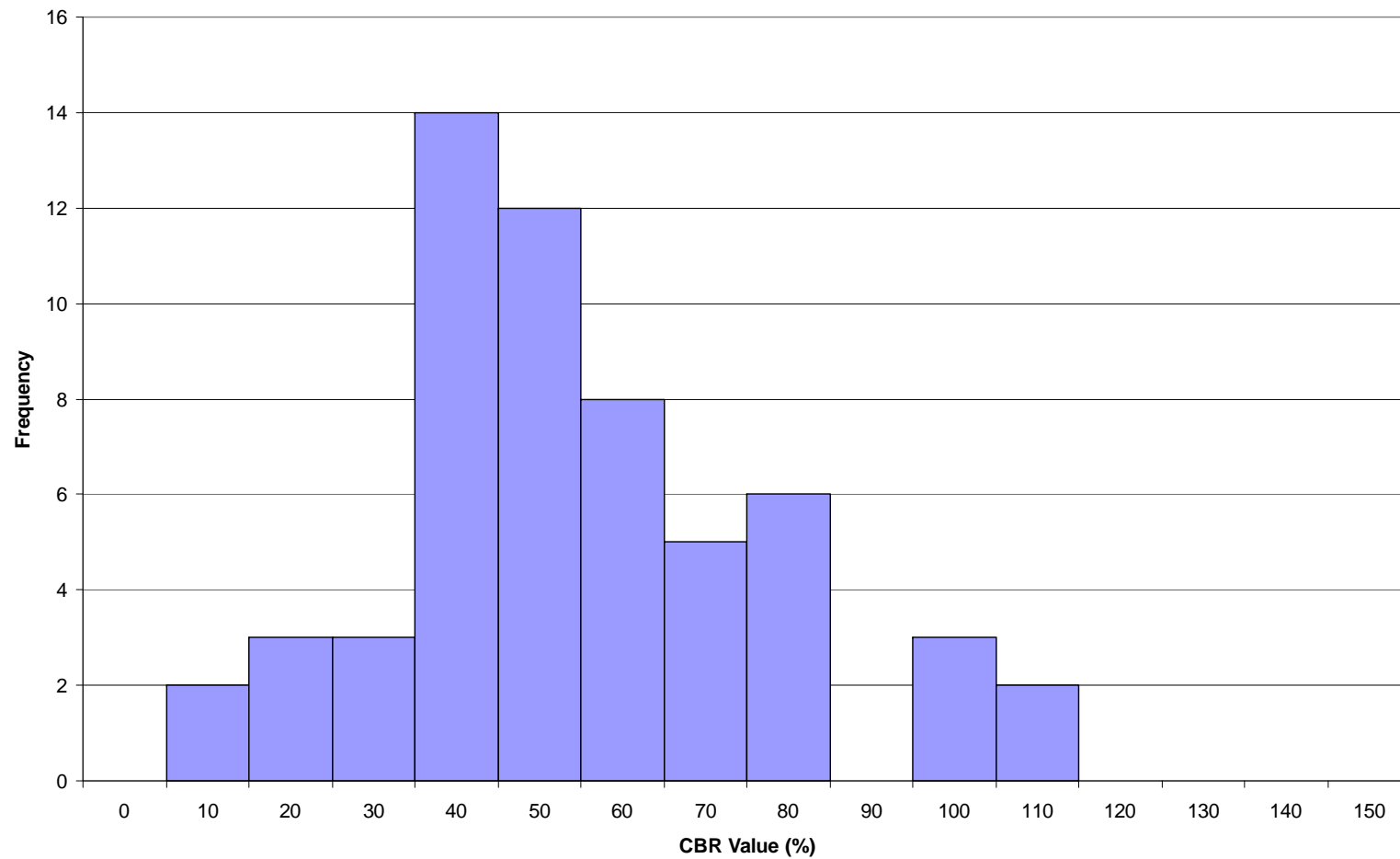
Compaction MC Frequency

Frequenc Distribution - MC As Compacted



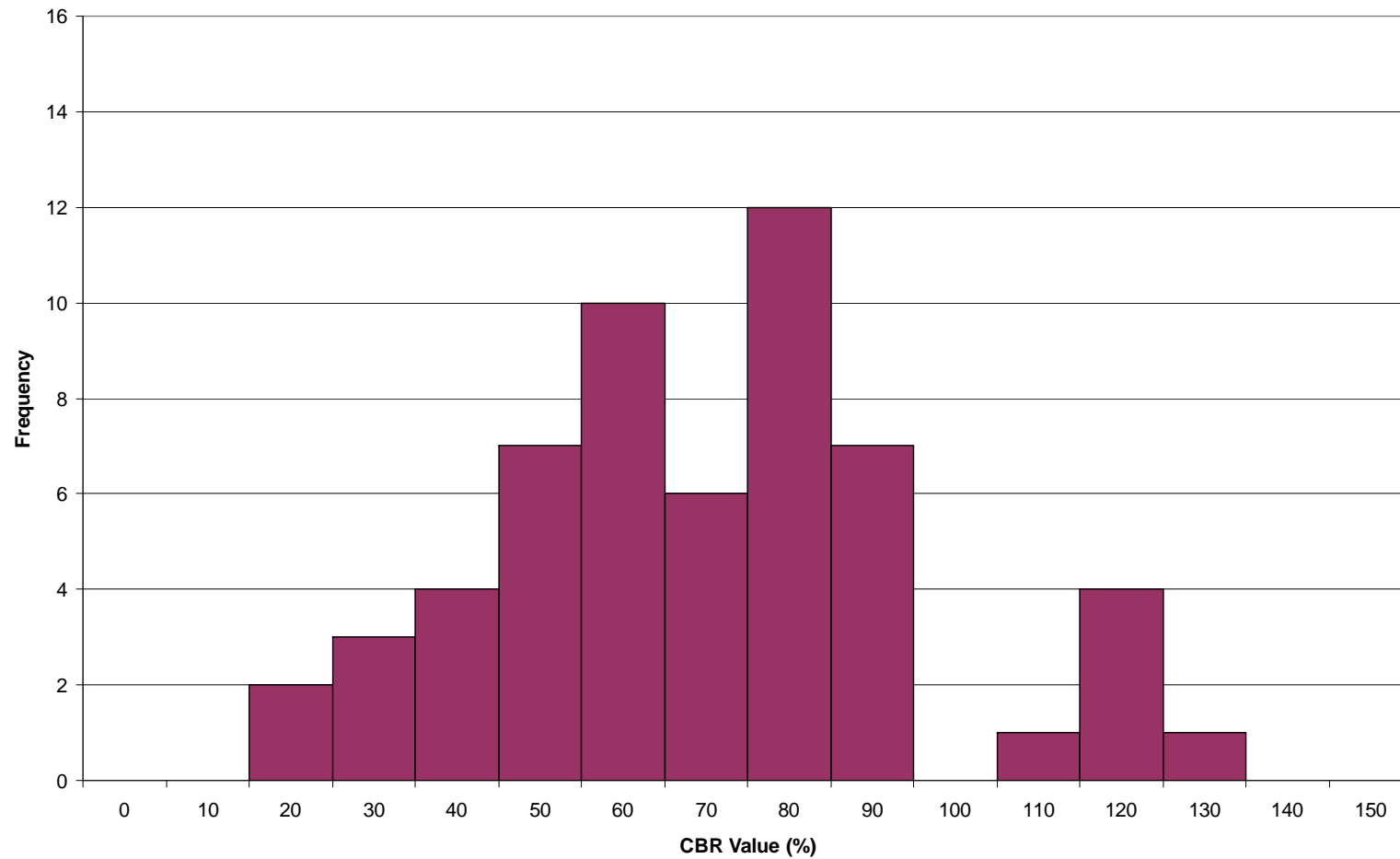
CBR 2.5 Frequency

Frequency Distribution - CBR 2.5

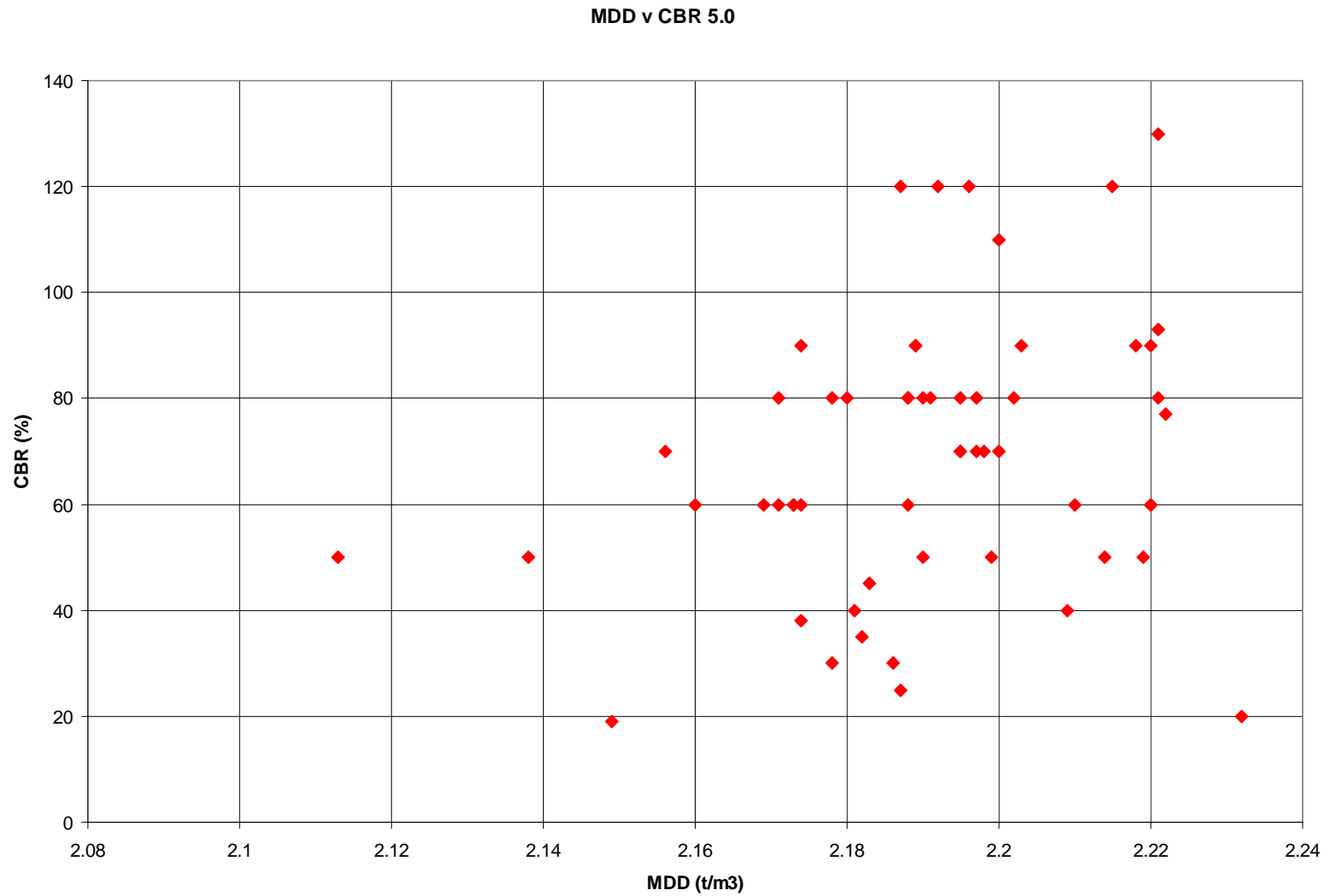


CBR 5.0 Frequency

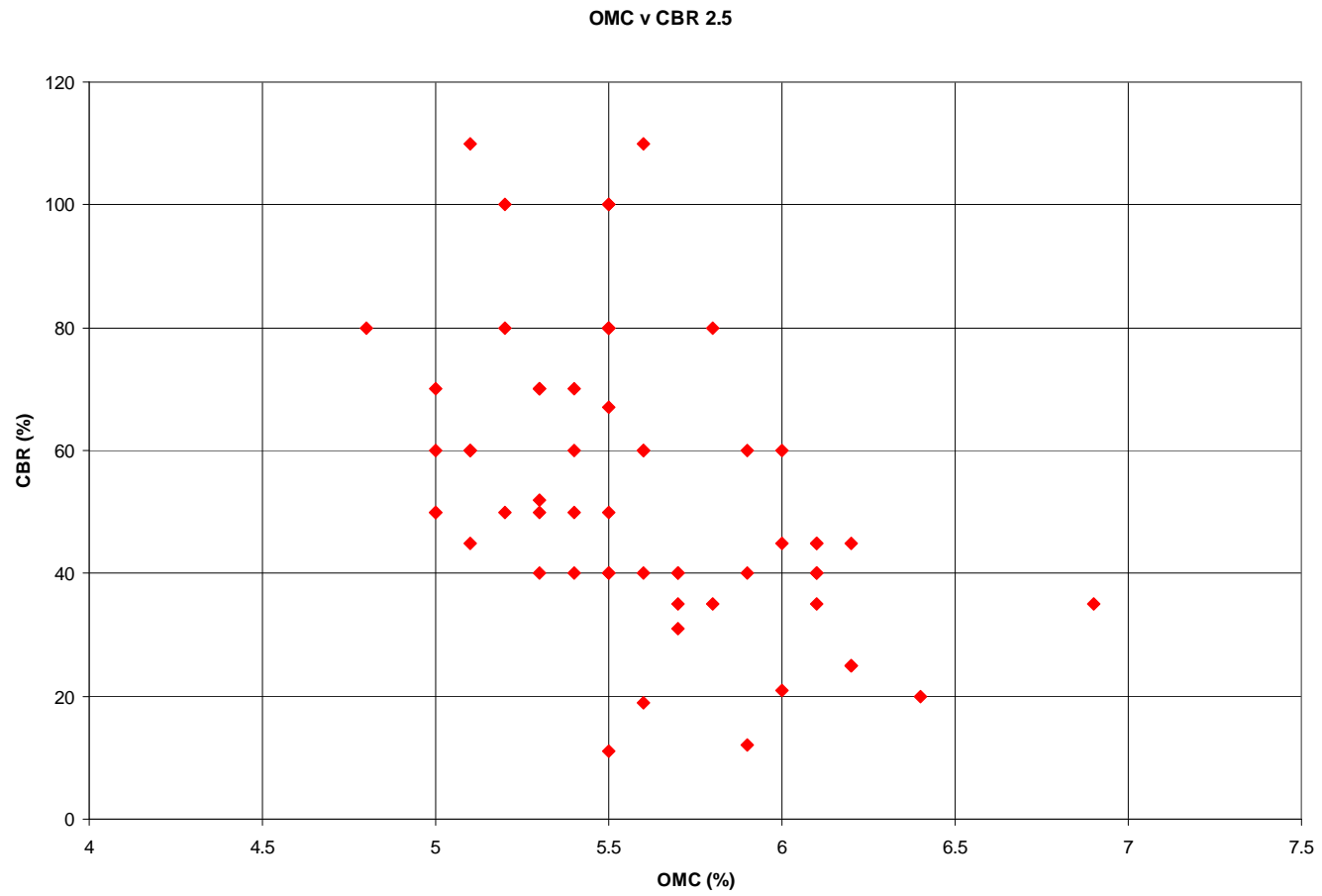
Frequency Distribution - CBR 5.0



MDD Effect

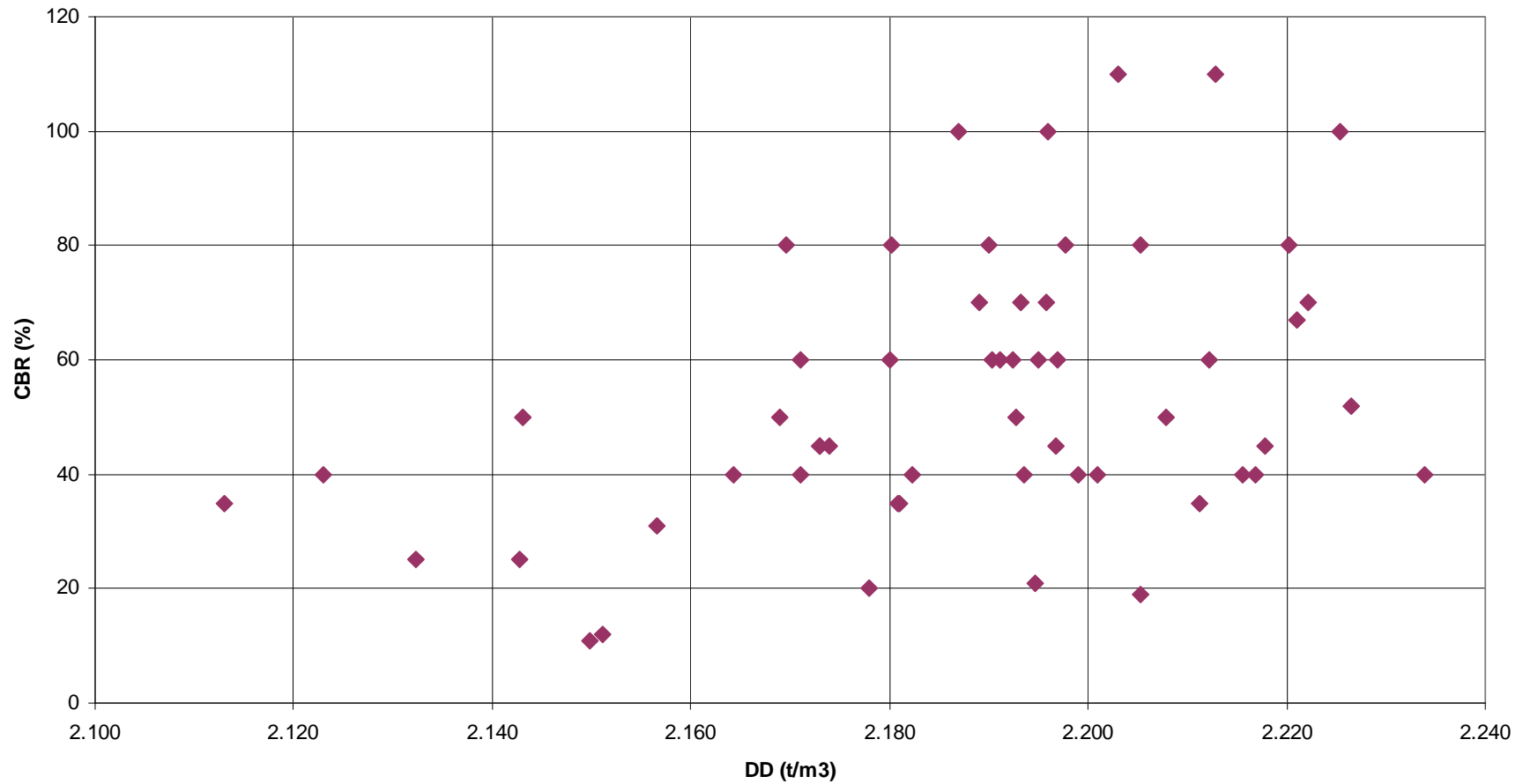


OMC Effect



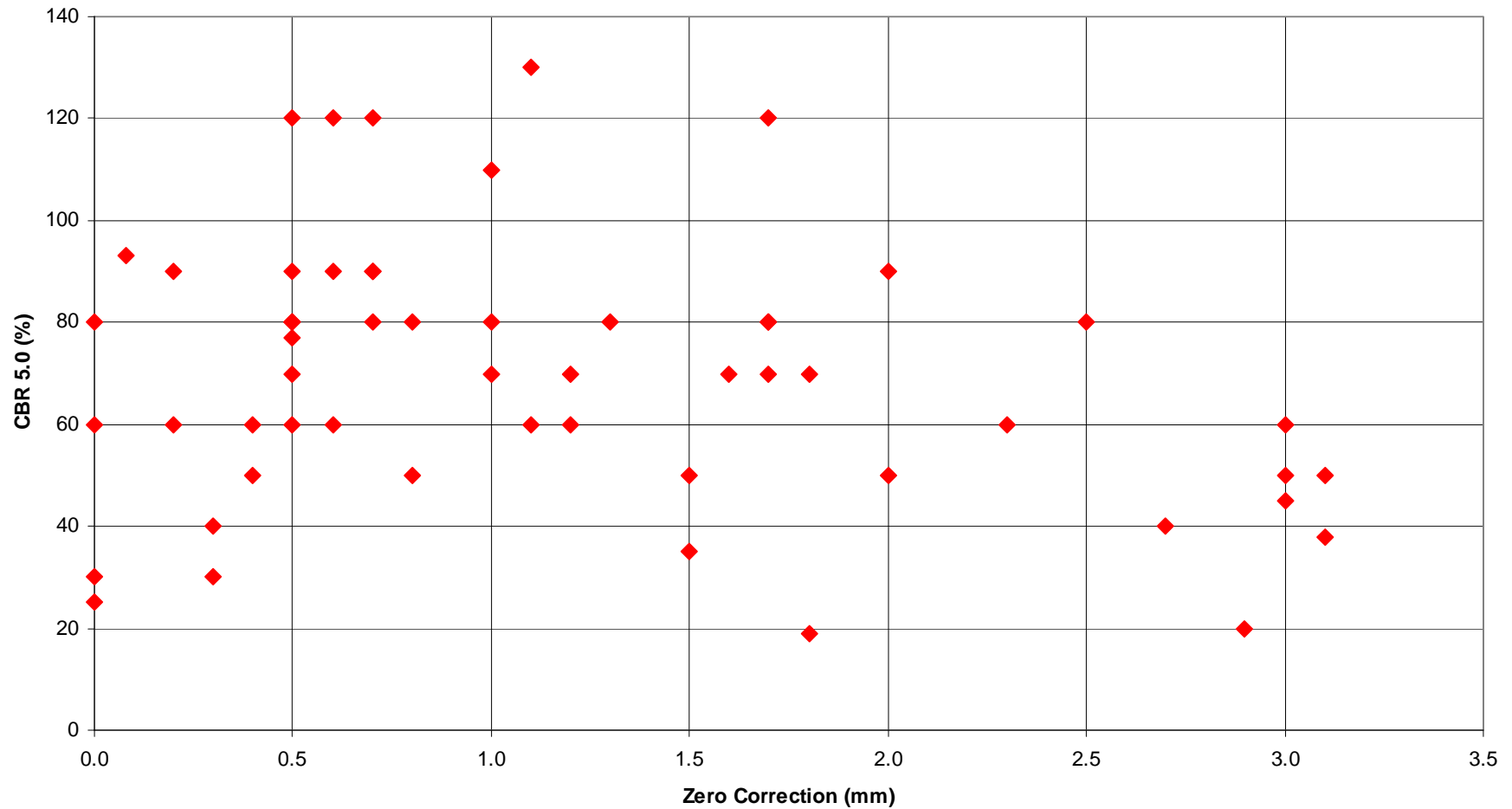
Compacted DD Effect

PT:A CBR Proficiency Programme - Soils Round #8
Compacted DD v CBR 2.5



Zero Correction Effect

Zero Correction v CBR 5



Some Other Conclusions

- Overall the results are terrible
- There appear to be 3 distinct ways to obtain MDD/OMC
- Control over test specimen condition is poor (25 – 30% clearly non-compliant)
- There are good reasons to suspect sample handling is poor (implied by zero correction effect)